



Virginia Healthcare Workforce Briefs

Indicators from the Bureau of Labor Statistics'
Current Employment Statistics Survey
Series 1: State & National Employment

Series 1, Issue 80

November 2018

Highlights

- ◆ According to preliminary estimates, Virginia's Health Care & Social Assistance (HC&SA) sector experienced its eighth consecutive month of positive employment growth in October. Virginia's HC&SA sector created 200 new jobs during the month, which represents a 0.5% annualized growth rate. So far this year, employment in Virginia's HC&SA sector has increased by 9,900.
- ◆ Virginia's total nonfarm payroll increased by 2,700 in October, which represents a one-month annualized employment growth rate of 0.8%. With this gain, Virginia's total nonfarm payroll has grown by 21,800 over the past three months. This three-month gain translates into a 2.2% annualized growth rate.
- ◆ Virginia's HC&SA sector was responsible for less than one percent of the 46,700 national HC&SA jobs that were created in October. Over the past year, the national HC&SA sector has created an average of 35,983 jobs per month. This gain represents a 2.2% employment growth rate.
- ◆ After experiencing its smallest monthly gain in one year in September, the nation's total nonfarm payroll rebounded strongly in October with a gain of 250,000. This increase translates into a 2.0% annualized growth rate, which represents an improvement relative to its 12-month growth rate of 1.7%.

Inside this Brief:

Virginia HC&SA Employment	2
Virginia Employment	2
National Employment	3
State Employment Growth	3
About the Data	4

Data in the report are seasonally adjusted. Self-employed persons, including health professionals in private practice, are not included.

Data in Brief

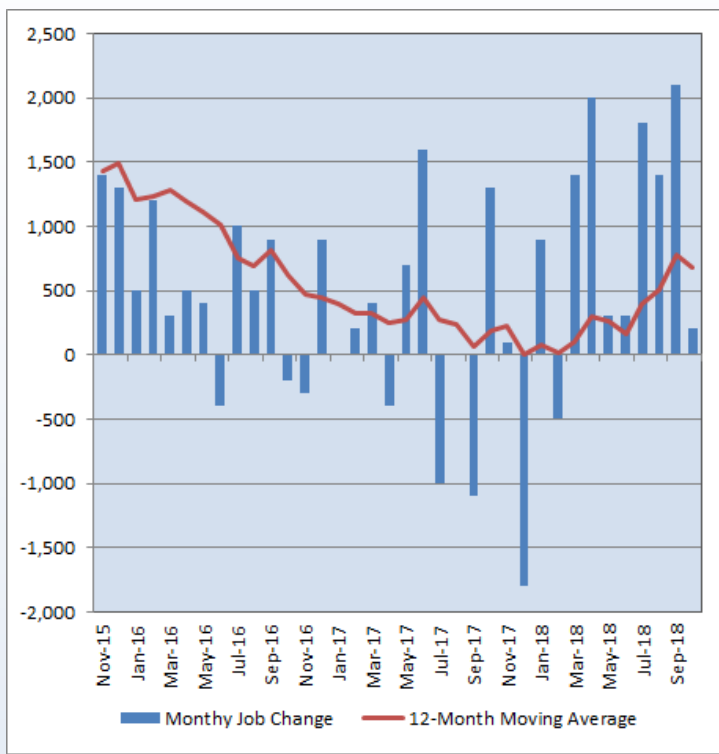
Seasonally Adjusted*	Employment, in Thousands				Growth Rate, Annualized		
	Oct. 2017	July 2018	Sept. 2018	Oct. 2018	12 Month	3 Month	1 Month
Nonfarm, Total							
Virginia	3,956.3	4,005.9	4,025.0	4,027.7	1.8%	2.2%	0.8%
National	147,234.0	149,096.0	149,500.0	149,750.0	1.7%	1.8%	2.0%
Health Care & Social Assistance							
Virginia	435.3	439.8	443.3	443.5	1.9%	3.4%	0.5%
National	19,625.7	19,923.4	20,010.8	20,057.5	2.2%	2.7%	2.8%
All Other Nonfarm							
Virginia	3,521.0	3,566.1	3,581.7	3,584.2	1.8%	2.0%	0.8%
National	127,608.3	129,172.6	129,489.2	129,692.5	1.6%	1.6%	1.9%

Preliminary estimates are italicized

*Seasonally adjusted data are adjusted by the Bureau of Labor Statistics to account for weather, holidays and other seasonal changes. Economists use seasonally adjusted data to reveal underlying trends over time. This series uses seasonally adjusted data exclusively. When comparing data in this series to other HWDC series, or publications from other sources, it is important to note whether the data reported have been seasonally adjusted.

Virginia HC&SA Employment

Figure 1: Monthly Change in Employment in Virginia’s Health Care & Social Assistance Sector, Seasonally Adjusted.



According to preliminary data released on Friday, November 16, 2018, by the U.S. Department of Labor, Bureau of Labor Statistics, Virginia’s Health Care & Social Assistance (HC&SA) sector created 200 new jobs in October, which represents a one-month annualized employment growth rate of 0.5%. This gain also represents the eighth consecutive month in which employment in Virginia’s HC&SA sector has increased. During these eight months of positive employment growth, Virginia’s HC&SA sector has created 9,500 new jobs across the state.

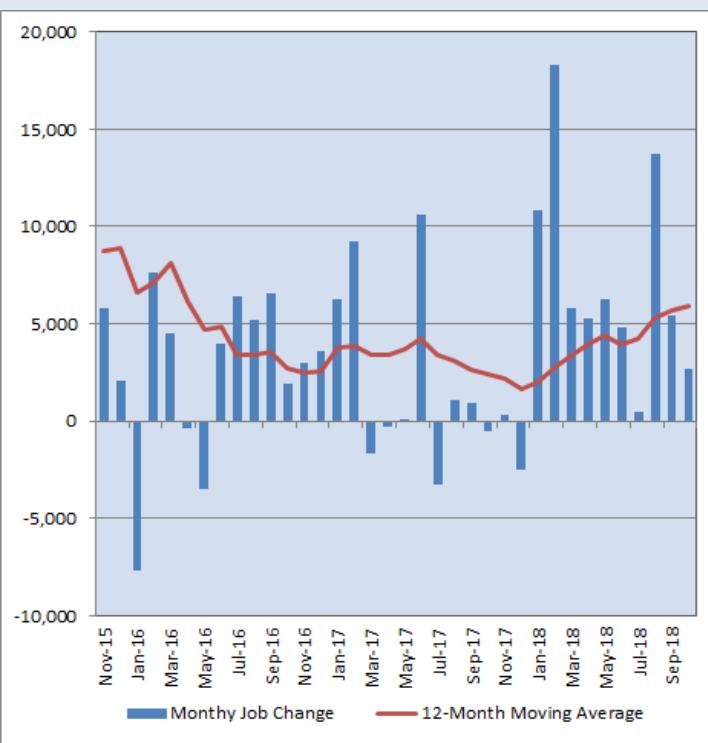
Although Virginia’s HC&SA sector enjoyed positive employment growth yet again in October, this month’s job gain was considerably smaller than in previous months. During the third quarter, Virginia’s HC&SA sector created an average of 1,800 jobs per month. Because of this slowdown, the 12-month moving average of the employment change in Virginia’s HC&SA sector fell for the first time since June. Regardless, long-term HC&SA employment growth has been impressive. Over the past year, Virginia’s HC&SA sector has created an average of 683 jobs per month.

Virginia Employment

Virginia’s total nonfarm payroll increased for the tenth consecutive month in October thanks to a gain of 2,700 during the month. With this gain, Virginia’s total nonfarm payroll has increased by 73,600 so far this year. This year-to-date gain represents a significant improvement relative to the 22,400 jobs that were created throughout the state during the first ten months of 2017.

Despite these impressive year-to-date employment gains, the growth in Virginia’s total nonfarm payroll has fallen considerably over the past two months. In August, the state’s total nonfarm payroll increased by 13,700. This represented the largest one-month gain in Virginia’s total nonfarm payroll since February. However, the state’s total nonfarm payroll only increased by 5,400 in September, and October’s monthly gain was half of that. October’s employment increase translates into a one-month annualized growth rate of 0.8%. This is less than half of the 1.8% growth rate in Virginia’s total nonfarm payroll over the past year. Regardless, the 12-month moving average of the change in Virginia’s total nonfarm payroll increased again in October to 5,950.

Figure 2: Monthly Change in Employment in Virginia’s Total Nonfarm Payroll, Seasonally Adjusted.

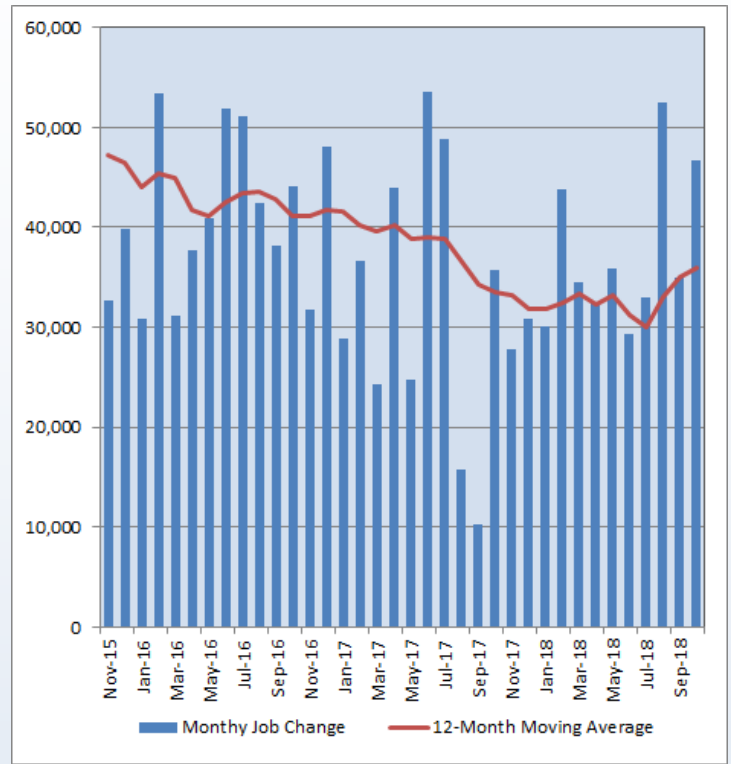


National Employment

The national HC&SA sector created 46,700 new jobs in October, a gain that translates into a 2.8% annualized employment growth rate. This gain represents a slight improvement relative to the employment growth observed in previous months. Since August, employment in the national HC&SA sector has increased by 134,100. This gain represents a three-month annualized employment growth rate of 2.7%. Thanks to this uptick in growth, the 12-month moving average of the employment change in the national HC&SA sector increased for the third consecutive month in October. Over the past year, the national HC&SA sector has created an average of 35,983 jobs per month. This represents the highest such average in more than one year.

Meanwhile, growth in the nation’s total nonfarm payroll rebounded strongly in October. After increasing by only 118,000 in September, the nation’s total nonfarm payroll experienced an increase of 250,000 this month. This gain translates into a one-month annualized growth rate of 2.0%. So far this year, the nation’s total nonfarm payroll has increased by 2.13 million. This result exceeds the comparable gain of 1.80 million during the same time period in 2017.

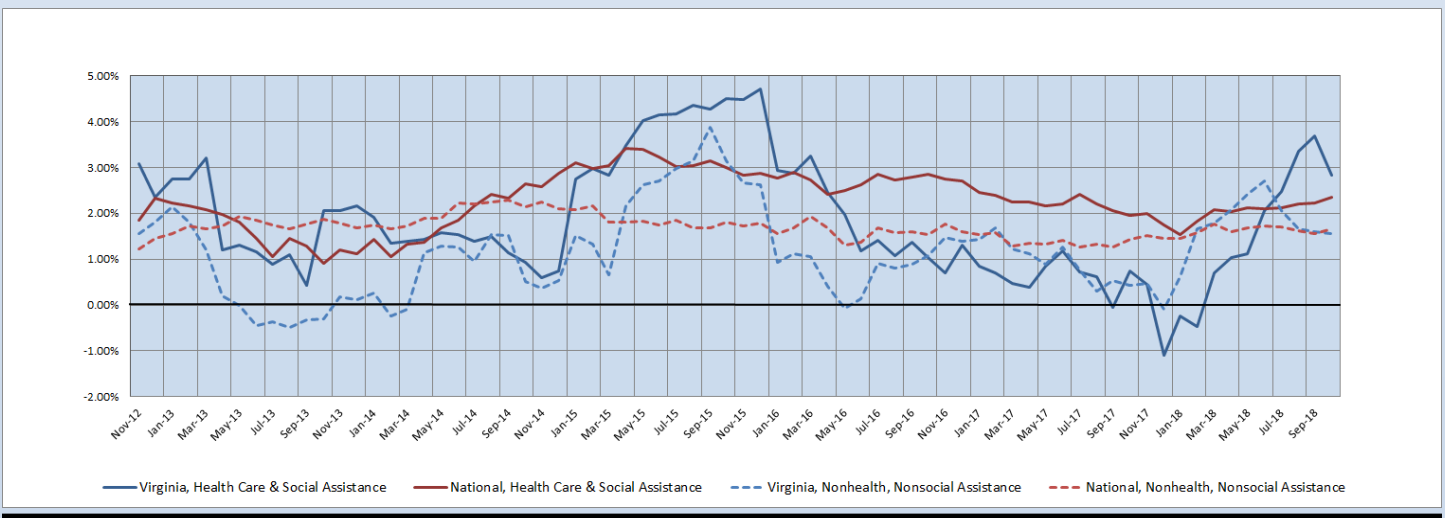
Figure 3: Monthly Change in Employment in National Health Care & Social Assistance Sector, Seasonally Adjusted



State Employment Growth

Despite creating new jobs in October, Virginia’s HC&SA sector experienced a significant decline in its six-month employment growth rate moving average from 3.68% to 2.83%. This represents the first time since February that the six-month moving average of the employment growth rate in Virginia’s HC&SA sector has declined. Meanwhile, the six-month moving average of the growth rate in Virginia’s total nonfarm payroll fell for the fourth consecutive month in October from 1.60% to 1.55%, thereby reaching its lowest value since January. On the other hand, the six-month moving average of the employment growth rate in the national HC&SA sector reached a fifteen-month high of 2.36%, while the comparable moving average for the nation’s total nonfarm payroll increased as well from 1.57% to 1.66%.

Figure 4: Six-Month Moving Average, Employment Growth, Seasonally Adjusted



**Healthcare Workforce
Data Center**

Perimeter Center
9960 Mayland Drive, Suite 300
Henrico, VA 23233-1463

Phone: (804) 367-2115
Fax: (804) 527-4434
E-mail: hwdc@dhp.virginia.gov

www.dhp.virginia.gov/hwdc/

HWDC Staff:

Elizabeth Carter, PhD <i>Executive Director</i>	Yetty Shobo, PhD <i>Deputy Director</i>
Laura Jackson <i>Operations Manager</i>	Christopher Coyle <i>Research Assistant</i>

Follow us on . . .

Tumblr: <http://vahwdc.tumblr.com/>

The Department of Health Professions Healthcare Workforce Data Center works to improve the data collection and measurement of Virginia's healthcare workforce through regular assessment of workforce supply and demand issues among the 80 professions and 350,000 practitioners licensed in Virginia by DHP.

The HWDC collects data on Virginia's licensed health professionals through surveys completed during the online license renewal and application process. Survey results and data may be accessed on our website: www.dhp.virginia.gov/hwdc/.

The HWDC also provides a series of Virginia Healthcare Workforce Briefs based on data collected by the US Department of Labor's Bureau of Labor Statistics and the US Department of Commerce' Bureau of Economic Analysis.

Virginia Healthcare Workforce Briefs:

Series 1: State & National Employment (Monthly)

Series 2: Virginia Regional Employment (Monthly)

Series 3: Income & Compensation (Quarterly)

About the Data

Data in this report are from the US Department of Labor, Bureau of Labor Statistics' Current Employment Statistics program. The CES program surveys about 143,000 businesses and government agencies monthly. Unless otherwise noted, this series uses seasonally-adjusted data that removes seasonal variations related to weather, holidays, weekends, seasons and other predictable variations. This allows us to better examine underlying trends in the labor market. Data from recent months are preliminary and subject to revision in future releases from the CES. Revisions will be reported in future editions of this series. Unless otherwise noted, the CES data presented in this series:

Includes:

- ◆ Data on employed individuals drawing a paycheck (payroll employees).
- ◆ All employees, regardless of role, occupation or hours worked.
- ◆ HC&SA employees in the private sector only.
- ◆ Persons employed by health professionals in private practice.
- ◆ Both government and private sector workers in nonfarm employment data.

Does not include:

- ◆ Self-employed workers or volunteers, including health professionals in private practice.
 - ◆ HC&SA employees in the public sector. (These are counted as government workers in monthly reports).
 - ◆ Information on hours worked or the quality of employment.
 - ◆ Government workers in HC&SA level data. (Government workers, regardless of occupation and role, are classified as public sector employees).
-